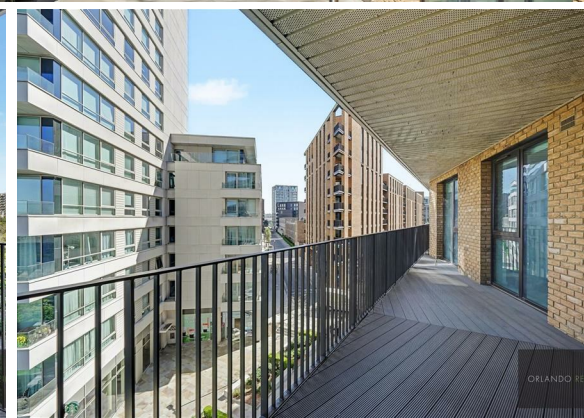
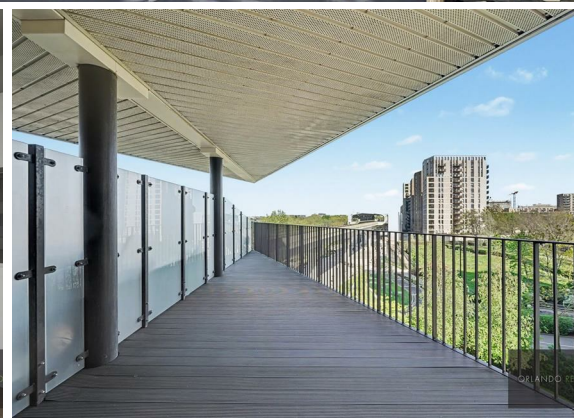




**2 Bed
Apartment
located in Royal
Wharf**

£2,500 Per Month



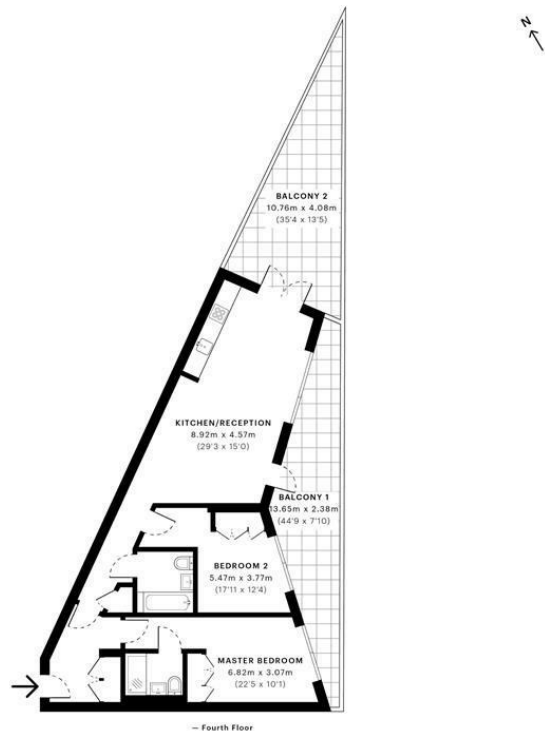


Mercier Court, E16

CAPTURE DATE:
30/09/2019

LASER SCAN POINTS:
46,737,378

GROSS INTERNAL AREA
84.0 Sqm / 904.3 Sqft



GROSS INTERNAL AREA
The footprint of the property
84.0 Sqm / 904.3 Sqft

NET AREA (INTERNAL)
Excludes walls and external features
79.8 Sqm / 859.1 Sqft

EXTERNAL STRUCTURAL FEATURES
Balconies, terraces, verandas etc.
41.1 Sqm / 442.8 Sqft

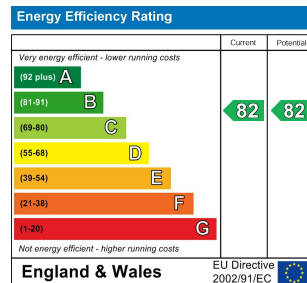
RESTRICTED HEAD HEIGHT
Limited use area under 1.8m
0.0 Sqm / 0.0 Sqft



Spec floor plans are produced in accordance with the Royal Institution of Chartered Surveyors' Property Measurement Standards. Plots and gardens are illustrative only and are excluded from all area calculations. Due to rounding, numbers may not add up precisely. All measurements shown for the individual room heights and widths are the maximum points of measurements captured in the scan.

IPMS 3B RESIDENTIAL
125.1 Sqm / 1347.1 Sqft
IPMS 3C RESIDENTIAL
121.0 Sqm / 1301.9 Sqft

SPEC ID:
5d86ef31300d9db08a1e274d3



DIRECTIONS

CONTACT

1-3 Old Town
Clapham
London
SW4 0JT

E: lettings@orlandoreid.co.uk
T: 020 7627 3197
www.orlandoreid.co.uk

